

## SOLAR LIGHT SOLAR STREET LIGHT

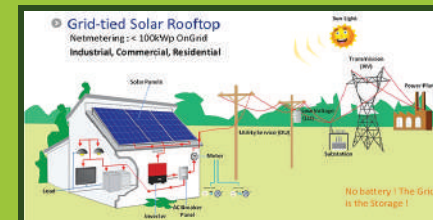
Available in 9w to 60w Model

- 2 Years warranty (will be increased upto 5 years and its depend upon rates)
- Compact design with integrated Solar panel, LED Light, Motion Sensor, Li-Ion Battery and Charge Controller.
- Integrated Li-Ion Battery Design in a such manner that it ensure to protection from battery theft.
- Solar Street Light uses PIR motion sensor, adjust the LED brightness automatically on detection any movement in 7 meter radius around to light. The LED glows at full brightness if movement is detected.
- Long battery life with Li-Ion Battery.
- Dusk to Dawn Features.
- Elimination of battery box and wishes.
- No need specialized electrician for installation.
- MS body, Easy to carry.
- No battery maintains required for 3-4 years.

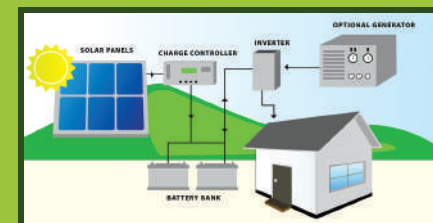


## ON/OFF-GRID SOLAR SYSTEM

On-grid solar power system is a Solar power Generation System where it is connected to the utility grid. The electricity produced by the system is routed to the grid from where it is used to run the various appliances. The installation of the same is also fuss free and easy to maintain.



One of the main types of the solar Power System is Off-Grid also known as a standalone power system (SAPS). It works by generating electricity from solar panels and using it to charge a Solar Battery via a charger controller. That electricity will be converted using an inverter so that it can power the business appliances. By saving the electricity in a solar battery, it is possible to run home appliances with solar energy, even at night or during times when there is less sun exposure.



## CONTACT US WE ARE WAITING

Sunil Patil +91 7447761413 • +91 8482912642

lumitakeich@gmail.com

Branch: Ichalkaranji 416 115, Dist.: Kolhapur

# GIVING YOU MORE FOR LESS!



FACEBOOK  
lumitake led light



GOOGLE +  
lumitakeich



INSTAGRAM  
lumitakeich

## FOLLOW US

## I HOME SOLAR SYSTEM



- **STHL 1** : 3w solar Panel + 6V 4.5Ah inbuilt Battery + 3W inbuilt LED Lamp + 1 qty 3w LED Bulb with 3 meter wire + Mobile Charging Facility with multiple pin + USB port for mobile charging cord (Backup Time 5-6 hours)
- **STHL 2** : 5w Solar Panel + 6V 4.5Ah inbuilt Battery + 3W inbuilt LED Lamp + 3w LED Bulb (2 qty) with 3 meter wire + Mobile Charging Facility with multiple pin + USB port for mobile charging cord (Backup Time 4-5 hours)
- **STHL 3** : 10w Solar Panel + 12V 7.2Ah inbuilt Battery + 5W inbuilt LED Lamp + 4qty 5w LED Bulb with 3 meter wire + Mobile Charging Facility with multiple pin + USB port for mobile charging cord (Backup Time 4-5 hours)

## LED STREET LIGHT, FLOOD LIGHT, Highbay Light

STREET LIGHT



FLOOD LIGHT



HIGHBAY LIGHT



LED Street Light have huge range of BIS Approved LED Street Light, Flood Light and Highbay Light which can be used in Grampanchayat, Corporation, PWD, ZP and Industrial Area as well as Private Sector.

- Power Factor => 0.95
- Index of protection Level - IP 65 & IP 67
- Color Temperature - 4000 to 6000 k.
- LED Make – High power LED Osram make.
- Lamp Housing – High Quality Pressure Die Cast Aluminium Heat Shrink Powder coated
- Surge Protection – 6 kv to 10 kv
- THD =< 15%
- Lumens Per watt – 100 lumens per watt

**STREE LIGHT** : 15W to 250W  
**FLOOD LIGHT** : 30W to 400W  
**HIGHBAY LIGHT** : 50W to 250W

## I BULB (5w to 30w)

Highly suitable for modern architecture lighting led bulbs are energy saving ultra efficient and environment friendly, they provide minimum glare with no hot spots and flicker free operation. In addition being light weight and long lasting these bulbs are suitable for dimming as well.



## I TUBE LIGHT (18w, 20w, 22w)

Environment friendly LED Tube Lights are energy saving, ultra-efficient, durable, and long lasting as compared to conventional T5, T8 fluorescent tubes. Easy to install feature makes them extremely convenient for high ceiling commercial & residential application.



## I FANCY LIGHT



## I PANEL LIGHT

These lights are smart, architecture masterpiece. 1panel is designed to reduce lighting with their brilliant light that's environment friendly, energy saving and ultra efficient. Specially designed for quick heat dissipation. LED panels are maintenance-free and give very high output as compared to CFL lamps. Lightweight and long lasting, these panels come in warm white and cool day light variants. LED panels are square / round shaped and their pleasing appearance in an ideal choice for indoor and outdoor false ceiling applications for home, shops, restaurant, hotel, hospital, malls, theaters etc commercial & residential application.

